



Lake Superior - Isle Royale

August 19-23, 2019

Join us aboard *The Lake Superior Diver* to Isle Royale!!



The waters of Isle Royale offer some of the best wreck diving in the world. Isle Royale National Park is a wilderness island located 20 miles from the Minnesota shore of Lake Superior. Beautiful but treacherous islands and shoals surround this 50-mile long island. These shoals have claimed about a dozen large ships. You can explore the rooms and machinery spaces of the more intact steel wrecks. Portholes, bottles, wrenches, lights, and lanterns are just some of the examples of artifacts, which still remain for you to see, enjoy, photograph, and leave behind .

The diving depths range from 20 feet to 140 feet and the water temperature around Isle Royale ranges from 39 to 60 degrees and in places will certainly be less than 45 degrees. Be prepared. A dry suit is recommended. The visibility ranges from 70 feet to 20 feet but generally averages 40 feet.

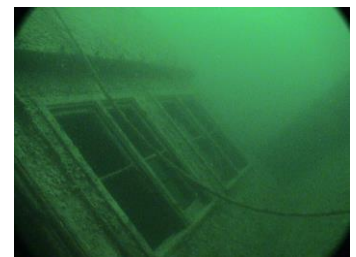
Isle Royale diving is not for novice divers. Managing the additional cold water gear, dealing with the deeper depths and an overhead environment makes this challenging diving. Advanced diver certification and a minimum of 50 open water dives with experience in shipwreck, deep, and cold water diving. Your logbook and gear configuration will be reviewed as proof of experience and final approval is at the discretion of the dive leader and/or the boat captain.

Trip Includes: 5 days, 4 nights aboard the vessel, air and nitrox fills, meals and non-alcoholic beverages. You are welcome to sleep aboard the boat, the evening of August 18.

Trip Cost: For divers: \$1200.00* per person plus tax. Gratuities and gasoline surcharge not included.

*Prices subject to change.

**A \$400.00 per person down payment will hold your spot.
Space is limited.**



LET'S GO DIVING!

9 Little Canada Road Little Canada, MN 55117 Tel: 651-482-0977
www.airdownthere.com